

SyncScan 2



Maximize your efficiency for PA and TOFD

SIUI



SyncScan 2

SIUI's newly launched SyncScan 2, is a high-end ultrasonic flaw detector with 32:128PR PAUT and 2-ch TOFD, which can maximize your efficiency for PA and TOFD.



Superior Features

- High IP rate: IP 65
- Light weight: 4kg only including battery.
- 8.4" LCD with resolution 800×600 pixels.
- Working temperature: -10℃ ~ 45℃
- Faster scan speed(Approximately 3 meters/minute).
- Removable electric fan: cool down the system when it works in high temperature.
- Support PA/TOFD/UT, suitable for weld, forging and plate inspection.
- 32-channel PA is more suitable for inspection on extra-thick wall and high-attenuation material.
- 32-channel PA and 2-channel TOFD work simultaneously, focusing on pressure vessel inspection.
- Support PR mode, focusing on pipe corrosion inspection when with high-end dual-crystal PA probe.
- System ports: encoder, VGA, standard SD card, USB 2.0/3.0.

Removable Electric Fan



Application Range

- Phased array inspection on tube, forged piece, bar, casting, weld, composite material, railway and alloy steel.
- TOFD inspection on weld of plate, pipeline, tank and boiler.
- Phased array, TOFD and conventional ultrasonic testing in various industries such as transportation, petrochemical engineering, machinery, metallurgy, railway, shipbuilding, aircraft and building.



Solution

PAUT Solution for Long-distance Pipeline

For one/dual-side inspection on long-distance pipeline in petrochemical industry.

Dual-side phased array inspection and PAUT+TOFD inspection for selection.



PAUT Solution for Small Pipe Weld

For girth weld inspection on pipe with OD ranging 20.32-114.3mm and wall thickness ranging 4-20mm.



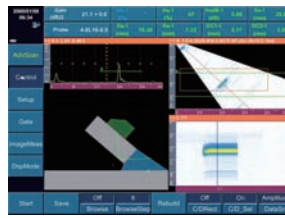
PAUT Solution for Medium Pipe Weld

For girth weld inspection on pipe with OD ranging 100-300mm.



PAUT/TOFD Solution for Flat Weld

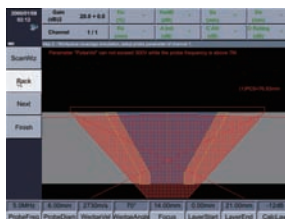
Compatible with different crawlers for various flat weld inspection.



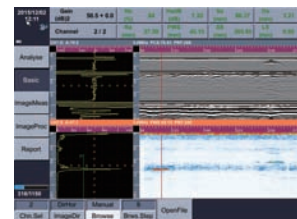
RayTracing (A+B+R scan)



Various Weld Types



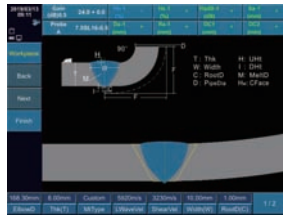
Beam Coverage Simulation



TOFD+Conventional UT to inspect blind zone area

PAUT Solution for Corrosion

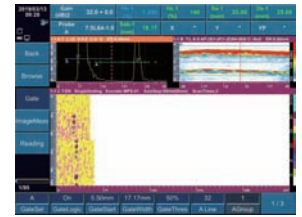
With Dual Linear Array Probe and different corrosion mapping scanner, SIUI's PA ultrasonic flaw detector can be used for phased array testing on small&medium areas, immersion pipeline and even for scanning in any direction in two-dimensional space.



Elbow Weld



Flange Weld



Corrosion C scan

Compatible Crawler



Phased array butt weld inspection crawler



Phased array & TOFD crawler



Corrosion mapping crawler